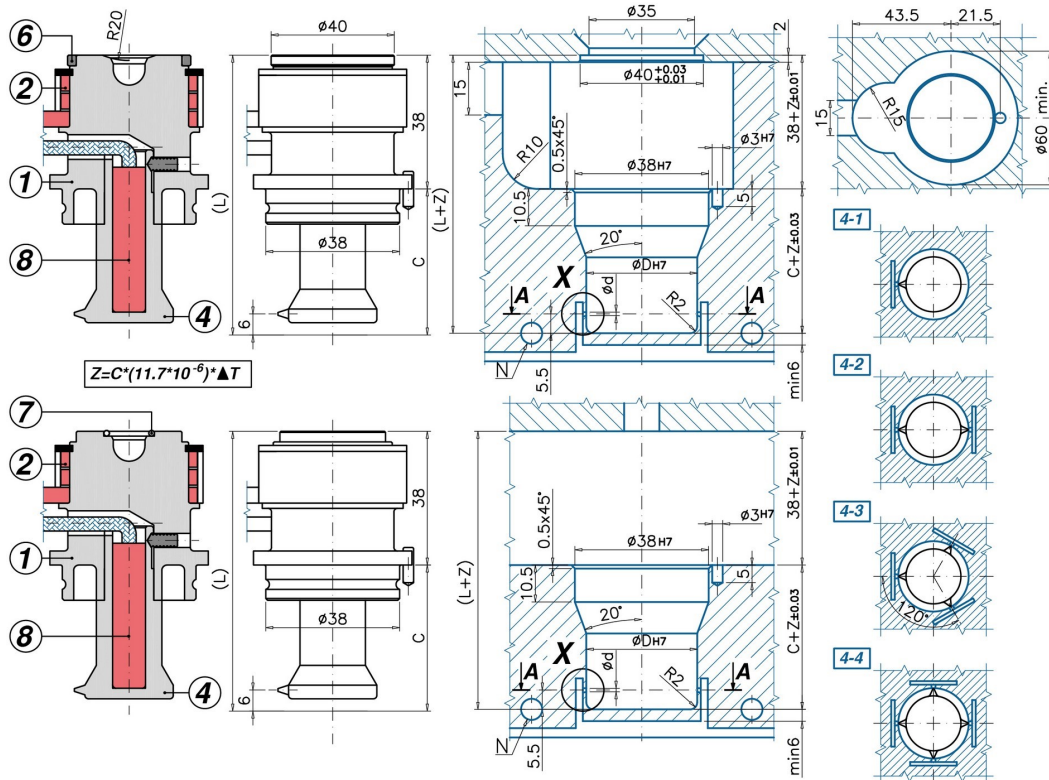


S Single Cavity Application



M MultiCavity Application

Code		C - L	1	2	4/0 - 1/2/3/4P	4/1 - 1/2/3/4P	6	7	8
UGGSL4510	1/2/3/4 M 0/1	C=41 L=79	UGCRG45M	REPTS350	UGPML401 1/2/3/4	UGPML411 1/2/3/4	-	UGACOR11	0950044B0300X
UGGSL4510	1/2/3/4 S 0/1	C=41 L=79	UGCRG45M	REPTS350	UGPML401 1/2/3/4	UGPML411 1/2/3/4	UGAS4030	-	0950044B0300X
UGGSL4520	1/2/3/4 M 0/1	C=53 L=91	UGCRG45M	REPTS350	UGPML402 1/2/3/4	UGPML412 1/2/3/4	-	UGACOR11	0950051B0300X
UGGSL4520	1/2/3/4 S 0/1	C=53 L=91	UGCRG45M	REPTS350	UGPML402 1/2/3/4	UGPML412 1/2/3/4	UGAS4030	-	0950051B0300X
UGGSL4530	1/2/3/4 M 0/1	C=65 L=103	UGCRG45M	REPTS350	UGPML403 1/2/3/4	UGPML413 1/2/3/4	-	UGACOR11	0950064B0350X
UGGSL4530	1/2/3/4 S 0/1	C=65 L=103	UGCRG45M	REPTS350	UGPML403 1/2/3/4	UGPML413 1/2/3/4	UGAS4030	-	0950064B0350X
UGGSL4540	1/2/3/4 M 0/1	C=77 L=115	UGCRG45M	REPTS350	UGPML404 1/2/3/4	UGPML414 1/2/3/4	-	UGACOR11	0950076B0400X
UGGSL4540	1/2/3/4 S 0/1	C=77 L=115	UGCRG45M	REPTS350	UGPML404 1/2/3/4	UGPML414 1/2/3/4	UGAS4030	-	0950076B0400X

INJECTION VESTIGE: T4L LATERAL MULTI-POINT, SINGLE TORPEDO NOZZLES WITH HEATED HEAD - YES: injecting more parts with one only nozzle - YES: more than one gate vestige on the same part - YES: SINGLE AND MULTY-CAVITY applications - YES: abrasive reinforcements (choose the 4/0 tip) - NO: colour change

- 1 = Nozzle body
- (M=MultiCavity / S=Single Cavity)
- 2 = Coil heater with J-type thermocouple
- 4/0 = Tempered steel Multipoints torpedo with No. 1-2-3-4 tips
- 4/1 = Cu-Be Multipoints torpedo with No. 1-2-3-4 tips
- 6 = Centering Ring
- 7 = O-Ring
- 8 = Cartridge heater with J type TC
- S = Anti-rotation dowel pin

Ød= Standard : 0,6 ÷ 1,0
 ØD= Standard: 32,0 - on request: 24 ÷ 38

