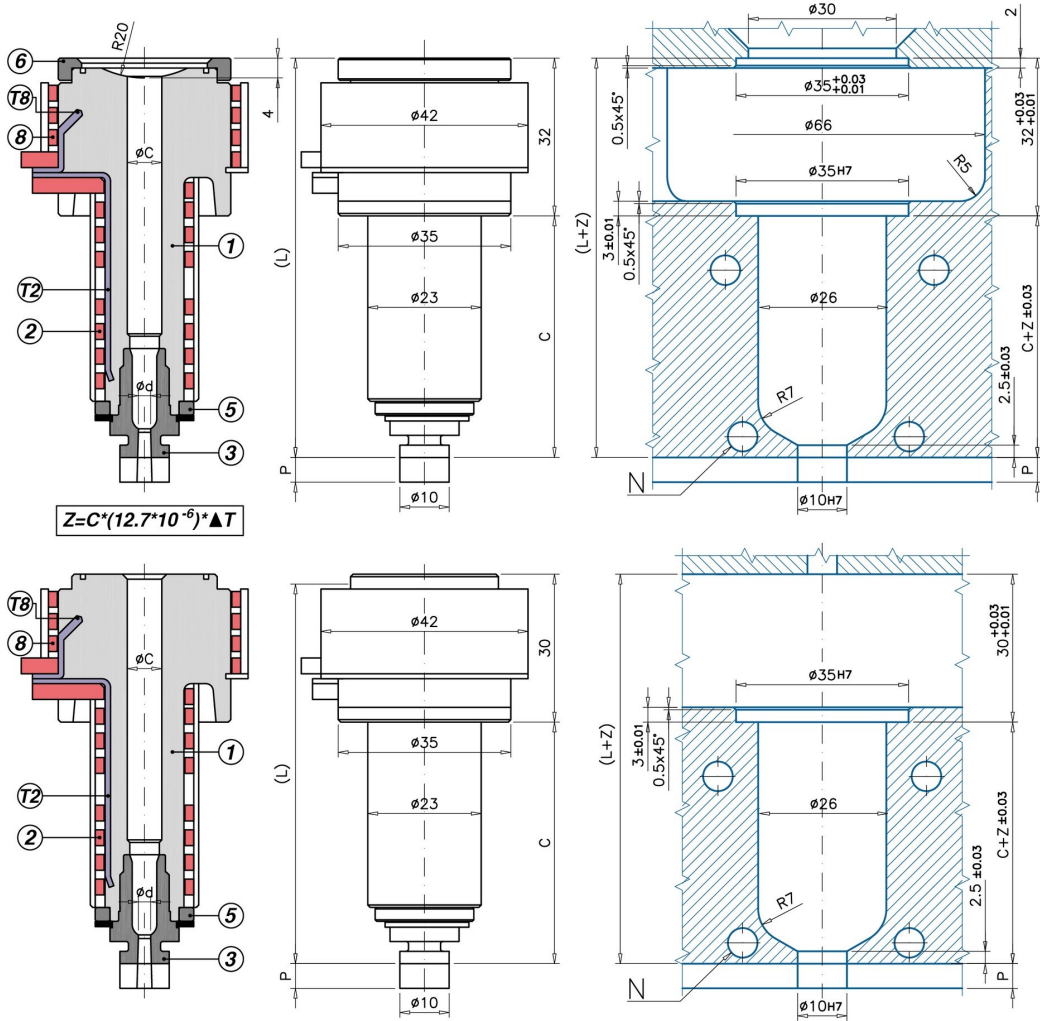


## S Single Cavity Application



## M MultiCavity Application

Code	C - L	1	2	T(2)	3 a 3° (-/P)	3 a 5° (-/P)	5	6	
UGBE3501MA	-/P 3/5	C=59 L=89	UGCR3501M	REPNSP3001	S101051000J	UGBC30/P	UGBC305/P	UGBE300AR	-
UGBE3501SA	-/P 3/5	C=59 L=91	UGCR3501S	REPNSP3001	S101051000J	UGBC30/P	UGBC305/P	UGBE300AR	UGAS3530
UGBE3502MA	-/P 3/5	C=89 L=119	UGCR3502M	REPNSP3002	S101551000J	UGBC30/P	UGBC305/P	UGBE300AR	-
UGBE3502SA	-/P 3/5	C=89 L=121	UGCR3502S	REPNSP3002	S101551000J	UGBC30/P	UGBC305/P	UGBE300AR	UGAS3530
UGBE3503MA	-/P 3/5	C=119 L=149	UGCR3503M	REPNSP3003	S101551000J	UGBC30/P	UGBC305/P	UGBE300AR	-
UGBE3503SA	-/P 3/5	C=119 L=151	UGCR3503S	REPNSP3003	S101551000J	UGBC30/P	UGBC305/P	UGBE300AR	UGAS3530
UGBE3504MA	-/P 3/5	C=159 L=189	UGCR3504M	REPNSP3004	S102051000J	UGBC30/P	UGBC305/P	UGBE300AR	-
UGBE3504SA	-/P 3/5	C=159 L=191	UGCR3504S	REPNSP3004	S102051000J	UGBC30/P	UGBC305/P	UGBE300AR	UGAS3530

INJECTION VESTIGE: T1 HEATED HEAD OPEN FLOW NOZZLES - YES: injection on sprues - YES: parts when the gate vestige look is not that critical - YES: intense colours, colour change and abrasive reinforcements - YES: Single and Multi-cavity applications - NO: plastics leaving stringings/droolings while mould opens; in such instance you can use EP-TR type nozzles - T2B/T2BP injection vestige.

- 1 = Nozzle body
- (M=MultiCavity / S=Single Cavity)
- 2= Head nozzle coil heater
- T(2) = Body nozzle J thermocouple
- 3 = Bushing
- 3/P = Bushing with machinable prolongation
- 5 = Copper ring
- 6 = Centering Ring
- 8 = Head nozzle coil heater (REPNS350)
- T(8)= Head nozzle J Thermocouple (S151051000)

ØC = Standard 6 - A richiesta: 7  
 Ød =Standard: 1,2-1,5-2,0-2,5  
 P = Standard: 20 - A richiesta: 0,5 ÷ 19,9  
 O-RING On request

