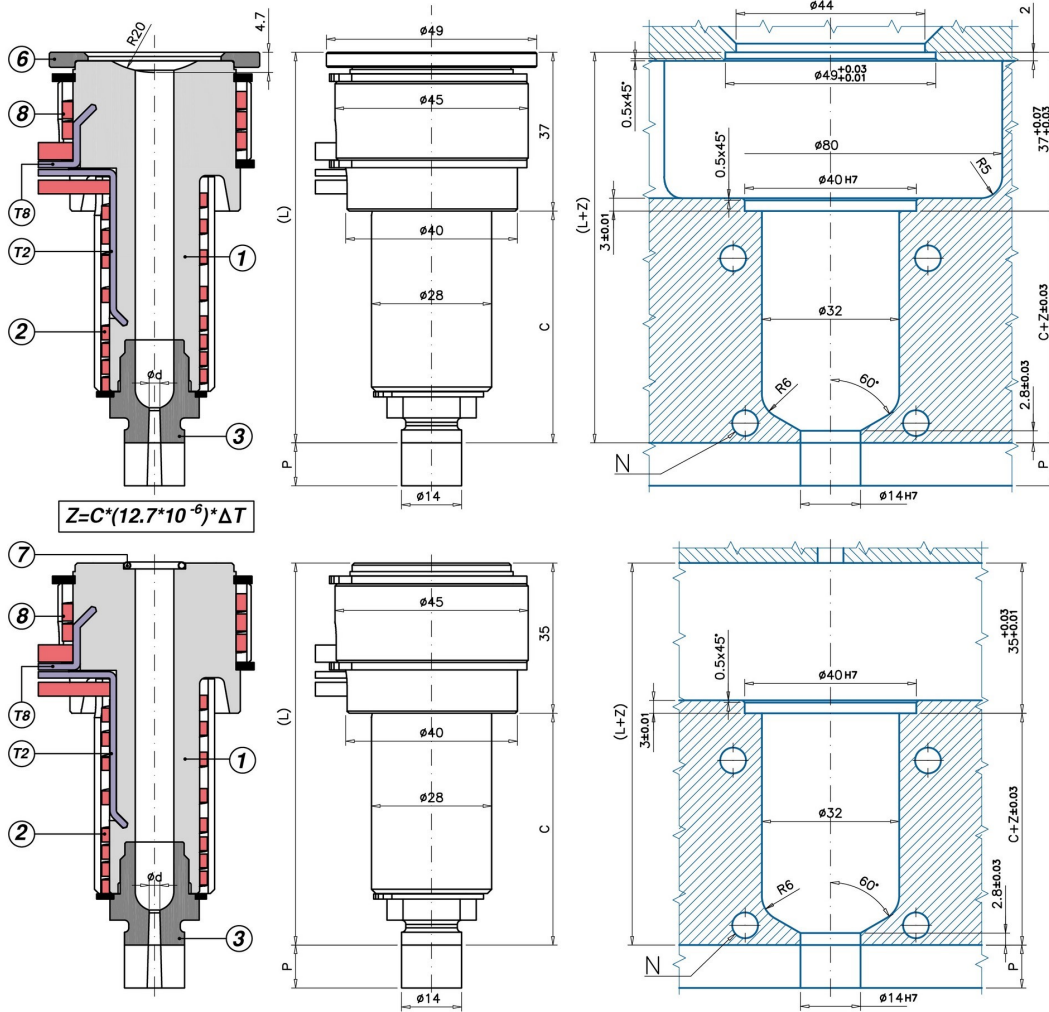


S Single Cavity Application



M MultiCavity Application

Code	C - L	1	2	T(2)	3 a 3° (-/P)	3 a 5° (-/P)	6	7
UGBE4501MA	-/P 3/5 C=54 L=89	UGCR4501M	REPNSP4001	S151051000J	UGBC40/P	UGBC405/P	-	UGACOR11
UGBE4501SA	-/P 3/5 C=54 L=91	UGCR4501S	REPNSP4001	S151051000J	UGBC40/P	UGBC405/P	UGAS4937	-
UGBE4502MA	-/P 3/5 C=84 L=119	UGCR4502M	REPNSP4002	S151051000J	UGBC40/P	UGBC405/P	-	UGACOR11
UGBE4502SA	-/P 3/5 C=84 L=121	UGCR4502S	REPNSP4002	S151051000J	UGBC40/P	UGBC405/P	UGAS4937	-
UGBE4503MA	-/P 3/5 C=114 L=149	UGCR4503M	REPNSP4003	S151551000J	UGBC40/P	UGBC405/P	-	UGACOR11
UGBE4503SA	-/P 3/5 C=114 L=151	UGCR4503S	REPNSP4003	S151551000J	UGBC40/P	UGBC405/P	UGAS4937	-
UGBE4504MA	-/P 3/5 C=164 L=199	UGCR4504M	REPNSP4004	S152051000J	UGBC40/P	UGBC405/P	-	UGACOR11
UGBE4504SA	-/P 3/5 C=164 L=201	UGCR4504S	REPNSP4004	S152051000J	UGBC40/P	UGBC405/P	UGAS4937	-
UGBE4505MA	-/P 3/5 C=214 L=249	UGCR4505M	REPNSP4005	S152551000J	UGBC40/P	UGBC405/P	-	UGACOR11
UGBE4505SA	-/P 3/5 C=214 L=251	UGCR4505S	REPNSP4005	S152551000J	UGBC40/P	UGBC405/P	UGAS4937	-

INJECTION VESTIGE: T1 HEATED HEAD OPEN FLOW NOZZLES - YES: injection on sprues - YES: parts when the gate vestige look is not that critical - YES: intense colours, colour change and abrasive reinforcements - YES: Single and Multi-cavity applications - NO: plastics leaving stringings/droolings while mould opens; in such instance you can use EP-TR type nozzles - T2B/T2BP injection vestige.

- 1 = Nozzle body
- (M=MultiCavity / S=Single Cavity)
- 2= Head nozzle coil heater
- T(2) = Body nozzle J thermocouple
- 3 = Bushing
- 3/P = Bushing with machinable prolongation
- 5 = Copper ring
- 6 = Centering Ring
- 8 = Head nozzle coil heater (REPNS450)
- T(8)=Head nozzle J Thermocouple (S151051000J)
- 7 = O-RING

ØC = Standard: 9 - On request: 10
 Ød = Standard: 1,2-1,5-2,0-2,5-3,0-3,5-4,0
 P = Standard: 25 - On request: 0,5 ÷ 24,9

