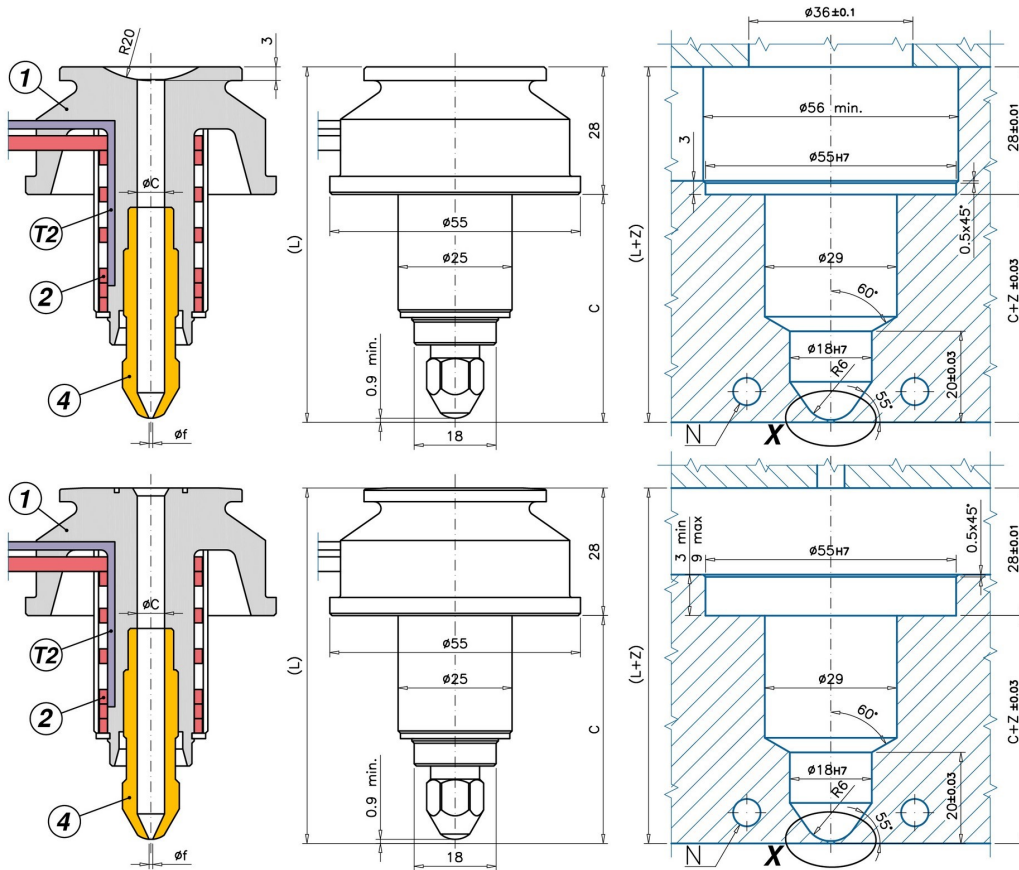


S Single Cavity Application



M MultiCavity Application

Code	C - L	1	2	T(2)	4/1	*
UGDL5412MA	C=50 L=78	UGDL512CM	REPNSPDL32	S151051000J	UGDL3500P	Z= 0,17
UGDL5412SA	C=50 L=78	UGDL512CS	REPNSPDL32	S151051000J	UGDL3500P	Z= 0,17
UGDL5413MA	C=70 L=98	UGDL513CM	REPNSPDL33	S151051000J	UGDL3500P	Z= 0,22
UGDL5413SA	C=70 L=98	UGDL513CS	REPNSPDL33	S151051000J	UGDL3500P	Z= 0,22
UGDL5414MA	C=90 L=118	UGDL514CM	REPNSPDL34	S151551000J	UGDL3500P	Z= 0,27
UGDL5414SA	C=90 L=118	UGDL514CS	REPNSPDL34	S151551000J	UGDL3500P	Z= 0,27

INJECTION VESTIGE: T3 NOZZLES FOR DIRECT INJECTION ON THE PART - YES: frequent color change - YES: intense colours NO - plastics leaving stringings /drolings while mould opens. - NO: plastics with melting temperature higher than 250°C (single cavity applications) - NO: plastics with melting temperature higher than a 270°C (multi cavity applications) - NO: abrasive reinforcements

- 1 = Nozzle body
- (M=MultiCavity / S=Single Cavity)
- 2 = Coil heater
- T(2) = J Termocouple
- 4 = Cu-Be Tip
- ØC = Standard: 6
- Ød = standard: 1,5 ÷ 1,7 - on request: 0,6 ÷ 3,2
- * = Elongation (nozzle temperature - mould temperature = 200°C)
- O-Ring on request

