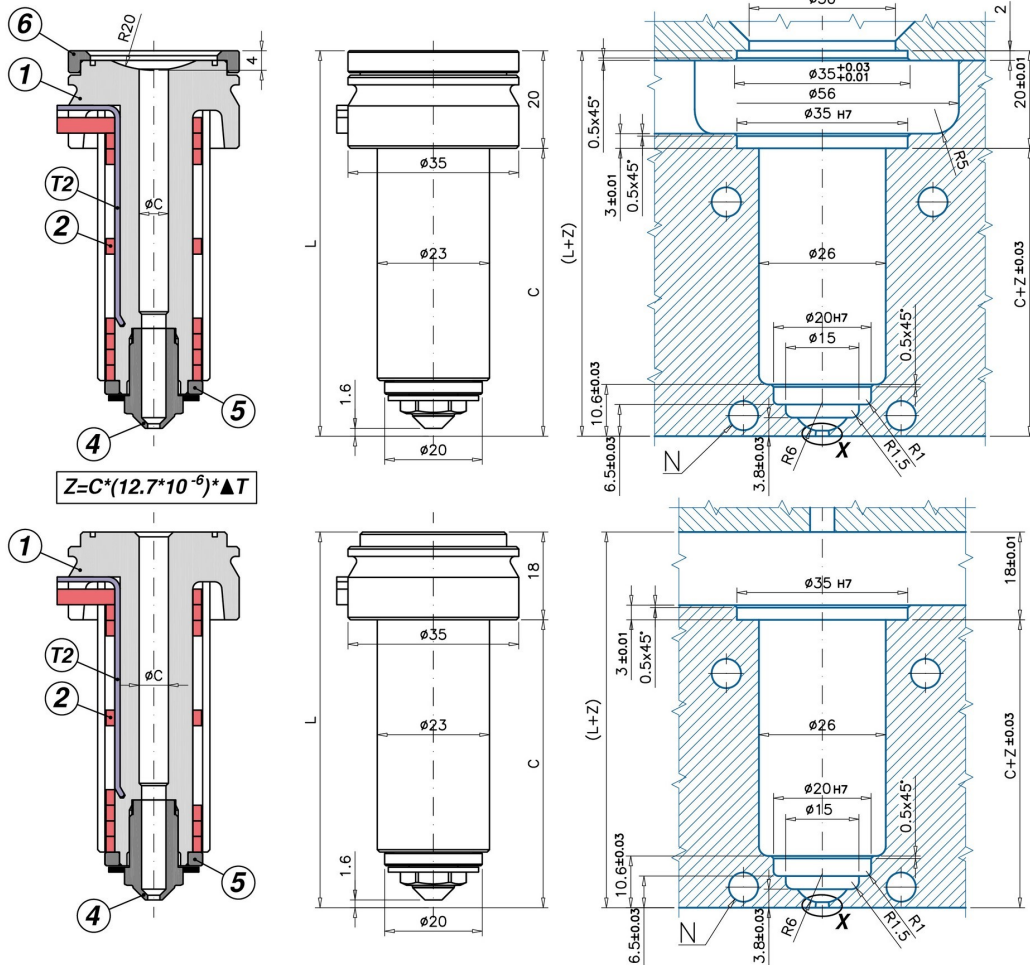


S Single Cavity Application



M MultiCavity Application

Code		C - L	1	2	T(2)	4/0	4/1	5	6
UGER3001MA	0/1	C=59 L=77	UGCR3001M	REPNSP3001	S151051000J	UGPU32TZ	UGPU32CU	UGER300AT	-
UGER3001SA	0/1	C=59 L=79	UGCR3001S	REPNSP3001	S151051000J	UGPU32TZ	UGPU32CU	UGER300AT	UGAS3530
UGER3002MA	0/1	C=89 L=107	UGCR3002M	REPNSP3002	S151551000J	UGPU32TZ	UGPU32CU	UGER300AT	-
UGER3002SA	0/1	C=89 L=109	UGCR3002S	REPNSP3002	S151551000J	UGPU32TZ	UGPU32CU	UGER300AT	UGAS3530
UGER3003MA	0/1	C=119 L=137	UGCR3003M	REPNSP3003	S151551000J	UGPU32TZ	UGPU32CU	UGER300AT	-
UGER3003SA	0/1	C=119 L=139	UGCR3003S	REPNSP3003	S151551000J	UGPU32TZ	UGPU32CU	UGER300AT	UGAS3530
UGER3004MA	0/1	C=159 L=177	UGCR3004M	REPNSP3004	S152051000J	UGPU32TZ	UGPU32CU	UGER300AT	-
UGER3004SA	0/1	C=159 L=179	UGCR3004S	REPNSP3004	S152051000J	UGPU32TZ	UGPU32CU	UGER300AT	UGAS3530

INJECTION VESTIGE: T3 NOZZLES FOR DIRECT MOLDING ON PARTS WHERE IS NOT IMPORTANT THE AESTHETIC APPEARANCE OF THE INJECTION WITNESS. - YES: frequent color change - YES: intense colours - YES: abrasive reinforcements (choose the 4/0 tip) - NO: plastics that leave stringings / droolings while mould opens - NO: SINGLE CAVITY applications, for plastics with melting temperature higher than 250°C

- 1 = Corpo ugello
- (M=Impronta Multipla / S=Impronta Singola)
- 2= Resistenza spiralata
- T(2) = J thermocouple
- 4/0 = Abrasive charges tip
- 4/1 = Cu-Be tip
- 5 = Titanium ring
- 6 = Centering ring
- ØC = Standard : 6 - On request: 7
- Ød = standard: 0,6÷2,5
- O-RING on request

