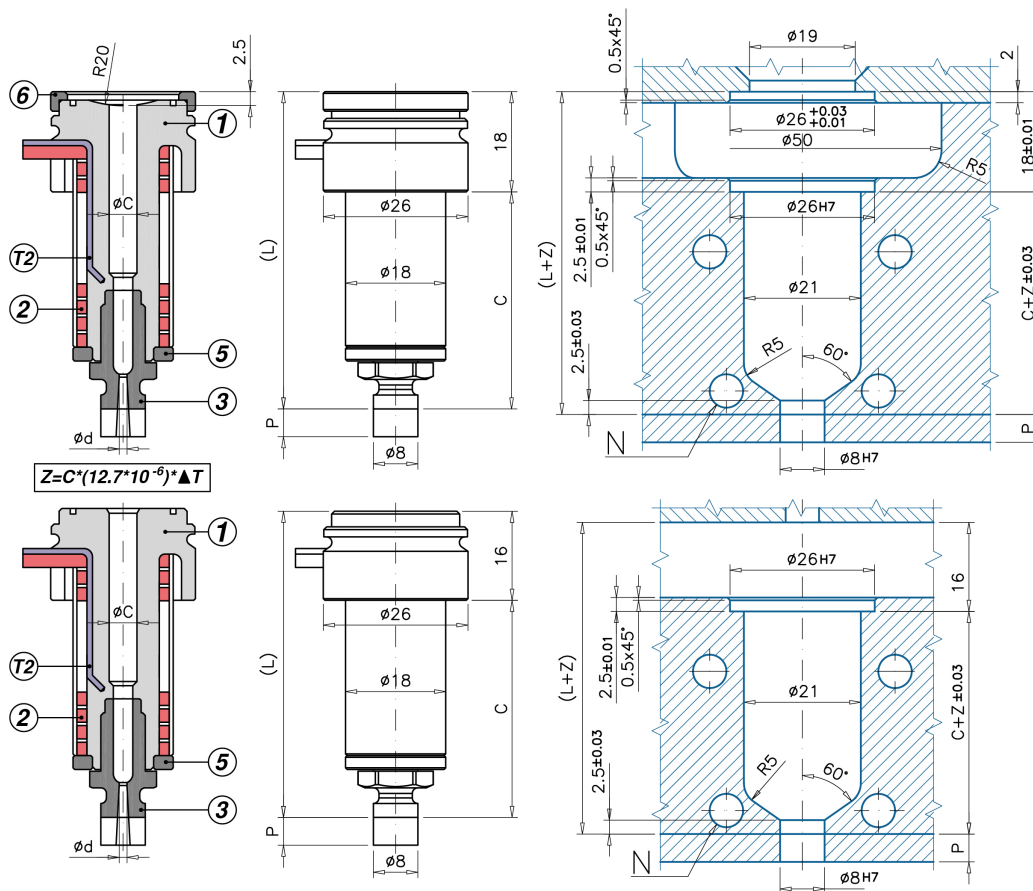


S Single Cavity Application



M MultiCavity Application

Code	C - L	1	2	T(2)	3 a 3° (-/P)	3 a 5° (-/P)	5	6
UGBE2001MA	-/P 3/5 C=45 L=61	UGCR2001M	REPNSP2001	S101051000J	UGBC20 / P	UGBC205 / P	UGBE200AR	-
UGBE2001SA	-/P 3/5 C=45 L=63	UGCR2001S	REPNSP2001	S101051000J	UGBC20 / P	UGBC205 / P	UGBE200AR	UGAS2623
UGBE2002MA	-/P 3/5 C=60 L=76	UGCR2002M	REPNSP2002	S101051000J	UGBC20 / P	UGBC205 / P	UGBE200AR	-
UGBE2002SA	-/P 3/5 C=60 L=78	UGCR2002S	REPNSP2002	S101051000J	UGBC20 / P	UGBC205 / P	UGBE200AR	UGAS2623
UGBE2003MA	-/P 3/5 C=80 L=96	UGCR2003M	REPNSP2003	S101051000J	UGBC20 / P	UGBC205 / P	UGBE200AR	-
UGBE2003SA	-/P 3/5 C=80 L=98	UGCR2003S	REPNSP2003	S101051000J	UGBC20 / P	UGBC205 / P	UGBE200AR	UGAS2623
UGBE2004MA	-/P 3/5 C=100 L=116	UGCR2004M	REPNSP2004	S101551000J	UGBC20 / P	UGBC205 / P	UGBE200AR	-
UGBE2004SA	-/P 3/5 C=100 L=118	UGCR2004S	REPNSP2004	S101551000J	UGBC20 / P	UGBC205 / P	UGBE200AR	UGAS2623

INJECTION VESTIGE: T1 OPEN FLOW NOZZLES - YES: injection on sprues - YES: intense colours, colour change and abrasive reinforcements - YES: MULTI-CAVITY applications - NO: direct moulding onto the part - NO: SINGLE CAVITY applications, for plastics with melting temperature higher than 250°C - NO: plastics leaving stringings/droolings while mould opens; in such instance you can use EP type nozzles - T2B/T2BP injection vestige.

- 1 = Nozzle body
- (M=MultiCavity / S=Single Cavity)
- 2= Coil heater
- T(2) = J Thermocouple
- 3 = Bushing
- 3/P = Bushing with machinable prolongation
- 5 = Copper ring
- 6 = Centering Ring
- ØC = Standard: 4 - On request: 5
- Ød = Standard: 1,2-1,5-2,0
- P = Standard: 10 - On request: 0,5 ÷ 9,9
- O-RING On request

