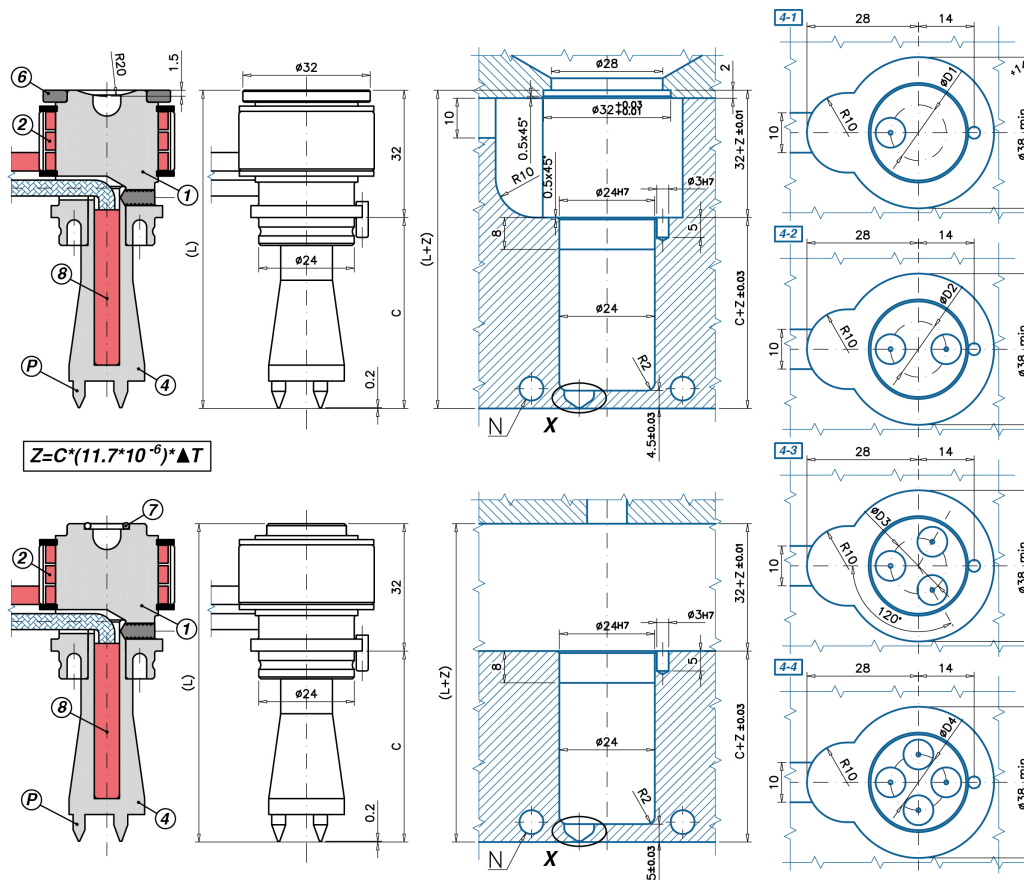


S Single Cavity Application



M MultiCavity Application

Code		C - L	1	2	4/1 - 1/2/3/4P	6 - 7	8	
UGGSA2610	1/2/3/4 M1	C=35 L=67	UGCRG25M	REPTS250	UGPMA211	1/2/3/4	UGACOR09	0630026B0160X
UGGSA2610	1/2/3/4 S1	C=35 L=67	UGCRG25S	REPTS250	UGPMA211	1/2/3/4	UGAS3220	0630026B0160X
UGGSA2620	1/2/3/4 M1	C=48 L=80	UGCRG25M	REPTS250	UGPMA212	1/2/3/4	UGACOR09	0630038B0175X
UGGSA2620	1/2/3/4 S1	C=48 L=80	UGCRG25S	REPTS250	UGPMA212	1/2/3/4	UGAS3220	0630038B0175X
UGGSA2630	1/2/3/4 M1	C=60 L=92	UGCRG25M	REPTS250	UGPMA213	1/2/3/4	UGACOR09	0630051B0200X
UGGSA2630	1/2/3/4 S1	C=60 L=92	UGCRG25S	REPTS250	UGPMA213	1/2/3/4	UGAS3220	0630051B0200X
UGGSA2640	1/2/3/4 M1	C=72 L=104	UGCRG25M	REPTS250	UGPMA214	1/2/3/4	UGACOR09	0630064A0250X
UGGSA2640	1/2/3/4 S1	C=72 L=104	UGCRG25S	REPTS250	UGPMA214	1/2/3/4	UGAS3220	0630064A0250X

INJECTION VESTIGE: T4V AXIALLY RANGED, MULTI-POINT SINGLE TORPEDO NOZZLES WITH HEATED HEAD - YES: injecting more parts with one only nozzle - YES: more than one gate vestige on the same part - YES: SINGLE AND MULTI-CAVITY applications - NO: abrasive charge (choose GSA 25) - NO: colour change

- 1 = Nozzle body
- (M=MultiCavity / S=Single Cavity)
- 2 = Coil heater with J-type thermocouple
- 4/1 = Cu-Be Multipoints torpedo with No. 1-2-3-4 tips
- 6 = Centering Ring
- 7 = O-Ring
- 8 = Cartridge heater with J type TC
- S = Anti-rotation dowel pin

- Ød= Standard : 0,6 ÷ 1,0
- ØD1= 2÷14
- ØD2= 8÷14
- ØD3= 9÷14
- ØD4= 11÷14

