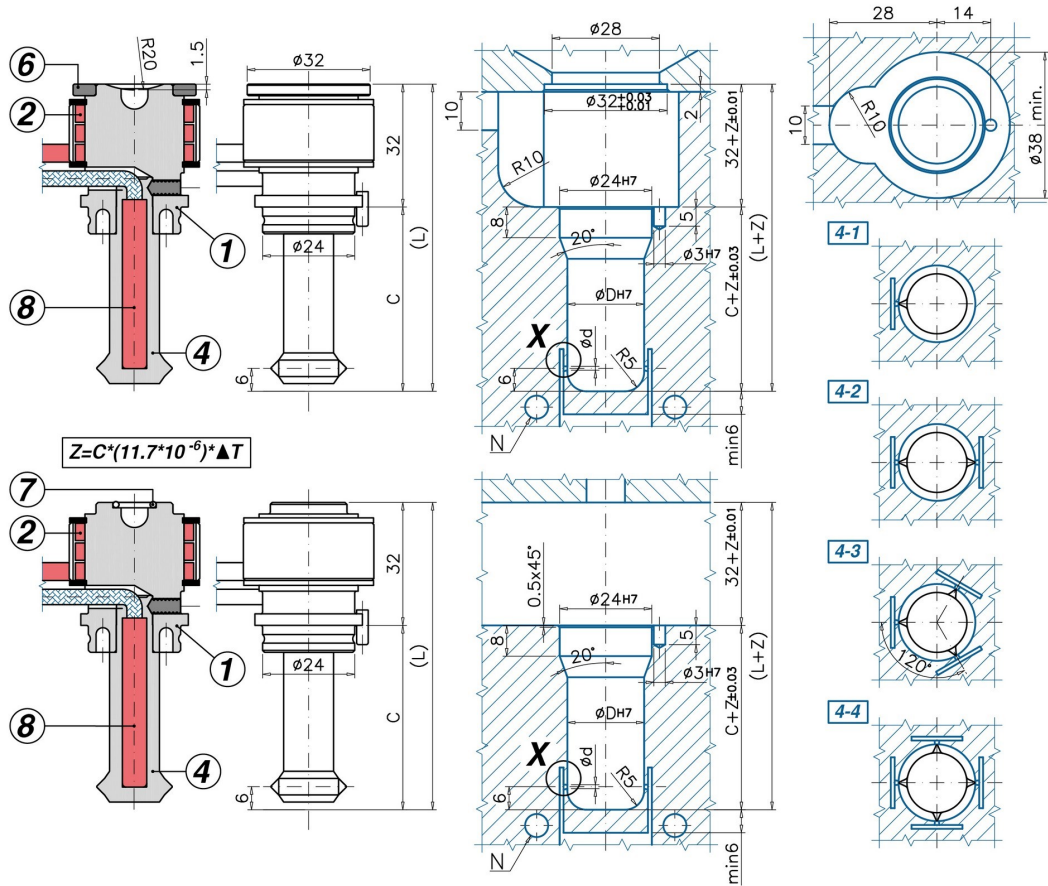


S Single Cavity Application



M MultiCavity Application

Code		C - L	1	2	4/0 - 1/2/3/4P	4/1 - 1/2/3/4P	6	7	8
UGGSL2510	1/2/3/4 M 0/1	C=30 L=62	UGCRG45M	REPTS250	UGPML201 1/2/3/4	UGPML211 1/2/3/4	-	UGACOR09	0630026B0160X
UGGSL2510	1/2/3/4 S 0/1	C=30 L=62	UGCRG45S	REPTS250	UGPML201 1/2/3/4	UGPML211 1/2/3/4	UGAS3220	-	0630026B0160X
UGGSL2520	1/2/3/4 M 0/1	C=43 L=75	UGCRG45M	REPTS250	UGPML202 1/2/3/4	UGPML212 1/2/3/4	-	UGACOR09	0630038B0175X
UGGSL2520	1/2/3/4 S 0/1	C=43 L=75	UGCRG45S	REPTS250	UGPML202 1/2/3/4	UGPML212 1/2/3/4	UGAS3220	-	0630038B0175X
UGGSL2530	1/2/3/4 M 0/1	C=56 L=88	UGCRG45M	REPTS250	UGPML203 1/2/3/4	UGPML213 1/2/3/4	-	UGACOR09	0630051B0200X
UGGSL2530	1/2/3/4 S 0/1	C=56 L=88	UGCRG45S	REPTS250	UGPML203 1/2/3/4	UGPML213 1/2/3/4	UGAS3220	-	0630051B0200X
UGGSL2540	1/2/3/4 M 0/1	C=68 L=100	UGCRG45M	REPTS250	UGPML204 1/2/3/4	UGPML214 1/2/3/4	-	UGACOR09	0630064B0250X
UGGSL2540	1/2/3/4 S 0/1	C=68 L=100	UGCRG45S	REPTS250	UGPML204 1/2/3/4	UGPML214 1/2/3/4	UGAS3220	-	0630064B0250X

INJECTION VESTIGE: T4L LATERAL MULTI-POINT, SINGLE TORPEDO NOZZLES WITH HEATED HEAD - YES: injecting more parts with one only nozzle - YES: more than one gate vestige on the same part - YES: SINGLE AND MULTY-CAVITY applications - YES: abrasive reinforcements (choose the 4/0 tip) - NO: colour change

- 1 = Nozzle body
- (M=MultiCavity / S=Single Cavity)
- 2 = Coil heater with J-type thermocouple
- 4/0 = Tempered steel Multipoints torpedo with No. 1-2-3-4 tips
- 4/1 = Cu-Be Multipoints torpedo with No. 1-2-3-4 tips
- 6 = Centering Ring
- 7 = O-Ring
- 8 = Cartridge heater with J type TC
- S = Anti-rotation dowel pin

Ød= Standard : 0,6 ÷ 1,0
ØD= 17-24

